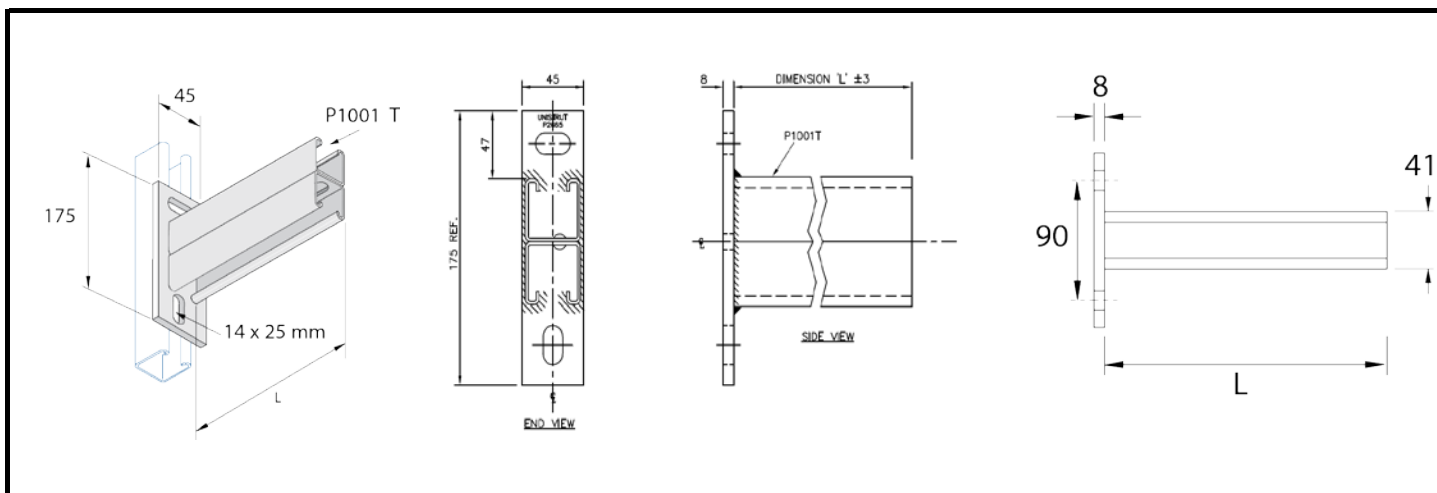


Product Data Sheet

P2665T Cantilever Arm



Part No.	Finish		Weight (kg)	L (mm)	Loading Diagrams			
	HG	SS			1/2 L	L	1/3 L	1/4 L
P2665T/150	•	•	1.44	150	8.82 kN	4.41 kN	4.41 kN	2.94 kN
P2665T/300	•	•	2.21	300	6.47 kN	3.23 kN	3.24 kN	2.15 kN
P2665T/450	•	•	3.09	450	4.31 kN	2.15 kN	2.15 kN	1.43 kN
P2665T/600	•	•	3.72	600	3.23 kN	1.61 kN	1.61 kN	1.07 kN
P2665T/750	•	•	4.73	750	2.58 kN	1.29 kN	1.29 kN	0.86 kN

Note:

Loading Indicated are only applicable when 2 fixings per cantilever arm are used.
Stated loadings apply to mild steel products only.

Material:

- HG Mild steel - BS EN 10149-3 grade S280 - min. yield 280 n/mm² - UTS 370 n/mm²
- DH BS EN 10025 S275JO+AR+CL1 or equivalent/better. 2mm min. thick material.
- SS Stainless Steel - Hot Rolled to B.S.EN10088-2-1.4404+1D

Finishes:

- HG Hot Dip Galvanized - to BS EN ISO 1461: to a mean coating thickness (minimum) of 55 µm.
- DH Hot Dip Galvanized - to BS EN ISO 1461: to a mean coating thickness (minimum) of 85 µm.
110 µm available upon request
- SS Stainless Steel - Grade 1.4404 (316L)